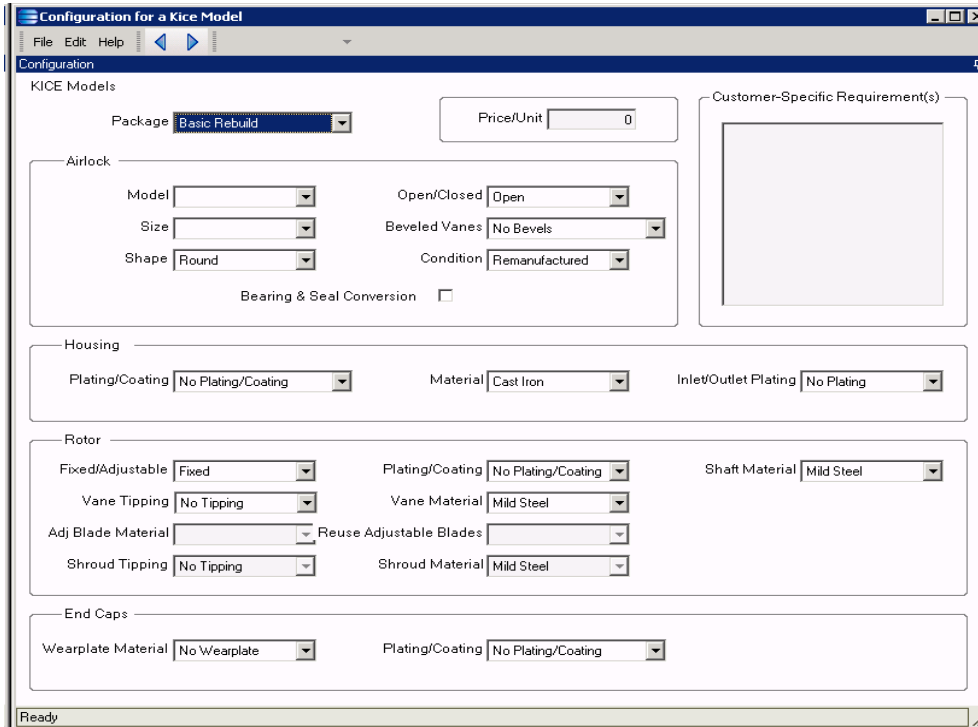


Rotary Airlock Configurator



Screen shot of Configurator customized for Rotary Airlock

Rotary Airlock, L.L.C. sets the standard for remanufacturing and reengineering all brands of airlocks, feeders and diverter valves. Glen

McClure is the owner at Rotary Airlock. Quotes were taking a month from receipt of the lock to estimate in the customer's hands. In the mean-

time, Glen had a warehouse chock full of airlocks and techs idled or sent home early.

Continued page 3

EPICOR Deep Dive

We write custom software for our clients. Many of our clients utilize EPICOR for their software. EPICOR is a very powerful ERP. In order to help our clients understand how to reap the full benefits of software they already own we are offering small "classes" on

topics which our clients choose. In order to ensure a hands on approach and personal attention, participation is limited to 4 or 5 people, consisting of two sessions with lunch provided afterward. Our most recent deep dive featured **Co-Products in EPICOR** And

Track tools and dies in EPICOR.

Previous attendees have expressed satisfaction.

"I really enjoyed the hands on approach."
Glen McClure of Rotary Air Lock

See Deep Dive page 3

Volume 1, Issue 1

Tuesday, August 24, 2010

Inside this issue:

Rotary Airlock	1
New CEO	2
Growth at Pronto Progress	2
Deep Dive Continued	3
Rotary Airlock Continued	3
What We Do	4

"The Deep Dive sessions created an intimate environment that gave me the chance to discuss and brainstorm my individual problems with other participants and the experienced EPICOR consultants at Pronto Progress in order to arrive to an optimal solution."
Mike Chirchirillo of Chirch Global Manufacturing.



**Susan Kingsley Pronto Progress'
New CEO**

"My main focus with Pronto Progress is mentoring the employees, teaching them sales skills and how to work by referral, so we can grow the company and assure customers are happy with our services and want to refer Pronto Progress to others who want quality programming service"

Welcome our new CEO Susan Kingsley

Pronto Progress is a company that works by referral. Our customers will refer us only when completely satisfied. I chose a role as CEO/ Master Mentor of Pronto Progress in August of 2010. My customer service and sales experience within the real estate industry since 1990 serves Pronto Progress very well, as my main focus with Pronto Progress is mentoring the employees, teaching them sales skills and how to work by referral, (so we can grow the company and assure customers are happy with our services and that they will want to refer Pronto Progress to others who want quality programming services). My ever growing career with RE/MAX Advantage Plus in Fort Lauderdale, Florida helps to bring cutting edge insight for sales, service and satisfaction for customers and employees.

I have been licensed in real estate since 1990, holding the Broker Associate license since 1997. I specialize in Buyer Representation. License held previously in Wisconsin, Missouri and Louisiana. Designations include ABR, (Accredited Buyer Representative), CDPE, (Certified Distressed Property Expert), CRS, (Certified Real Estate Specialist), GRI, (Graduate of Realtors Institute), SRES, (Senior Real Estate Specialist) and TRC, (Transnational Referral Certified).

Professional & social memberships include: National, State & Local Board of Realtors, Real Estate Buyers Agent Council, Council of Residential Specialists, Senior Advantage Real Estate Council, International Consortium of Real Estate Agents, Buffini & Company Club Net, Womens Executive Club of Fort Lauderdale, (VP of

Community Events for 2009/2010 & 2010/2011 years), Greater Fort Lauderdale Chamber of Commerce, (Diplomat/Welcome Committee), Madison Who's Who, USA Dance Inc. and Bally's Total Fitness.

Interests include raising Monarch butterflies, jazz, sailing, flying, traveling with my husband Timothy, ballroom dancing, inline skating, hiking, flower gardening, pastry work, (I was a pastry cook in life prior to real estate) & more. Volunteer activities present & past include Welcome Committee/ Greater Fort Lauderdale Chamber of Commerce, Lighthouse Broward, Starlight Starbright Children's Foundation & Easter Seals.



Growth in the Company

We here at Pronto Progress have been experiencing growth not only in our locations but also in our personnel. Joining our Team in Ft Lauderdale is Dwayne Jackson, Yves LaFrance & Jarvis Denison. We have also add-

ed personnel in Milwaukee, John Meyers. In an effort to provide better care of our Chicago clients and attract new ones we have opened a new Chicago office. Here you will find Tom Heskin & Patrick McLeod. We are located

at 401 North Michigan Ave suite 1200 in downtown Chicago. Our main office in Milwaukee will be moving upstairs into a larger space. And to top it off, we are now authorized Resellers of EPICOR.

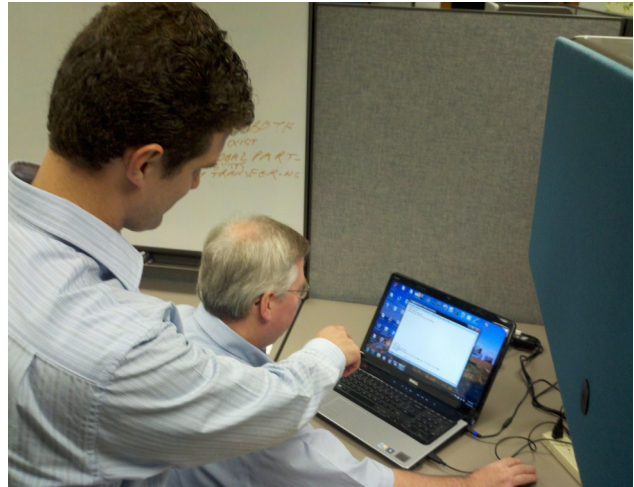
Deep Dive

"The Deep Dive Sessions created an intimate environment that gave me the chance to discuss and brainstorm my individual problems with other participants and the experienced EPICOR consultants at Pronto Progress in order to arrive to an optimal solution."

Mike Chirchirillo of Chirch Global Manufacturing.

"The Q&A and group interaction were a very positive experience."
 Jeff Kusiciel of Plitek

Deep Dive sessions are FREE and hosted every two months. The Next one will be in October. Remember space is limited so reserve your seat now. Call Tom Heskin @ 312.840.8215



No need to bring a Laptop we supply them. You are welcome to remote into your own server if you like however.

Rotary Airlock

continued from pg 1

Turn time was unnecessarily long, with the front end delay.

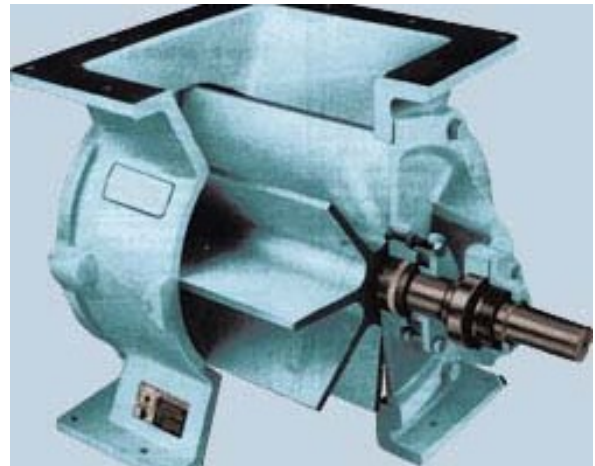
Glen was referred to us by Mike England of Epicor.

Using the EPICOR Configurator Pronto mapped out prices and options by EOM manufacturer and model. Quotes now take only minutes to generate and email to the customer. Rotary set a record for re-builds in a month, due in part to this process improvement.

Finally, confidence in the

quoted price allows Glen to trim the number of internal steps and reviews of each quote. In addition, the Configurator acts as a self-trainer - limiting the options, avoiding conflicting options and giving Glen flexibility in whom he chooses to do estimates.

Using the Epicor Configurator, properly implemented, Glen knows that within 10 minutes a quote is done and accurate and he enjoys the comfort of knowing the price meets his necessary margins.



Example of a Rotary Airlock. Rotary airlocks are important components of pneumatic conveying, bulk solids handling and batching systems. A rotary airlock is also known as rotary valve, rotary feeder or airlock feeder. The main function of a rotary valve is to control flow of bulk solids from silo, mixer, cyclone or hopper under gravity, pressure and vacuum conditions. Airlocks can work on pressure and vacuum applications.



Tom Heskin

Pronto Progress

Done Once, Done Right

401 North Michigan Ave
Suite 1200
Chicago, IL 60133

Phone: 312.840.8215
Mobile: 312.805.0328
Fax: 262.524.5512
Email: tah@prontoprogess.com

Check us out online
www.prontoprogess.com



What we do

Change is inevitable. Like people, businesses either get busy living, or get busy dying. I facilitate positive change helping business managers, c-level executives and owners to fully utilize their considerable information technology investment to drive out non-value adding labor and cut to the chase. Software: we'll install it, upgrade it, ditch it, write it, implement it and train folks in it. We believe identifying trends is vital. We routinely focus on key performance indicators, supporting C-Level executives so they can move decisively on their goals.

If you know a goal driven executive that could use us, I'd love to hear about it."

"We helped Rotary Air Lock (25 employees) turn around customer quotes quicker - from a month to a day.

We helped AeroThrust (400 employees) eliminate 66% of their payroll clerks, simultaneously making labor, payroll and billing accounting 100% accurate.

We jump-started a stalled Epicor 9 implementation at Chirch Global Manufacturing (30 employees), going live in just 3 weeks.

We continue to implement new EDI business partners and special needs for Johnson Controls (\$70B) Battery Division – recently implementing Wal-Mart.

For Solo Cup (\$40B), we integrated an Atlanta acquisition into the Solo business system.

We integrated the PLC's of the world's largest ISO-Thermal press at Ladish (900 Employees) seamlessly into Infor's ERP producing product certifications for Ladish aerospace customers GE, Pratt Whitney, Volvo and Rolls Royce."

By the way we are never to busy for your referrals!



Pronto Progress Locations

W229 N1433 Westwood Dr.
Suite 101
Waukesha, WI 53186 USA
(262) 524-5500

1100 Lee Wagener Blvd
Suite 309
Ft. Lauderdale, FL 33315
(954) 359-6444

401 North Michigan Ave
Suite 1200
Chicago, IL 60611
(312) 840-8215